



Hard Chess Puzzle # 0096

By

G Bud Games
<https://gbud.in>

January 5, 2022

Contents

Hard Chess puzzle # 0096 - Mate in 3 moves	3
Hard chess puzzle 0096	3
Solution to hard chess puzzle 0096	4
Solution 1	4
Right moves for the solution to the hard chess puzzle 0096	7
Explanation for the moves	7
Categories of hard chess puzzle 0096	8
hard chess puzzle 0096 chart	9
How to view the solution to hard chess puzzle 0096	11
How to get help for moves in the hard chess puzzle 0096	12
Play chess for free	13

List of Figures

1	Solve this hard chess puzzle 0096. Mate in 3 moves @ https://gbud.in/gshtn73	3
2	Solve this hard chess puzzle online with solution @ https://gbud.in/gshtn73	3
3	Initial board position of hard chess puzzle 0096	4
4	Nxg2+	5
5	Kd1	5
6	Qf3+	6
7	Nxf3	6
8	Be2#	7
9	hard chess puzzle 96 chart 1	9
10	hard chess puzzle 96 chart 2	10
11	hard chess puzzle 96 chart 3	10
12	hard chess puzzle 96 chart 4	11
13	Click the solution button to view solutions @ https://gbud.in/gshtn73	11
14	Click the help button to get help on next move @ https://gbud.in/gshtn73	12
15	Solve more hard puzzles @ https://gbud.in/chshdpz	12
16	Solve other puzzles @ https://gbud.in/chsgppz	12
17	Play chess online for free. Solve puzzles and play with friends	13
18	Solve this puzzle online by scanning this QR code or go to the link below	14

Hard Chess puzzle # 0096 - Mate in 3 moves

Solve this hard chess puzzle and improve your chess games through improvement of your chess strategies and chess tactics. This hard puzzle is a subset of [kids games](#).

Puzzle No : 0096

Difficulty level : hard

Description : Mate in 3 moves

Next Move : Black

Player level : Advanced

Short URL for puzzle : <https://gbud.in/gshn73>

Hard chess puzzle 0096

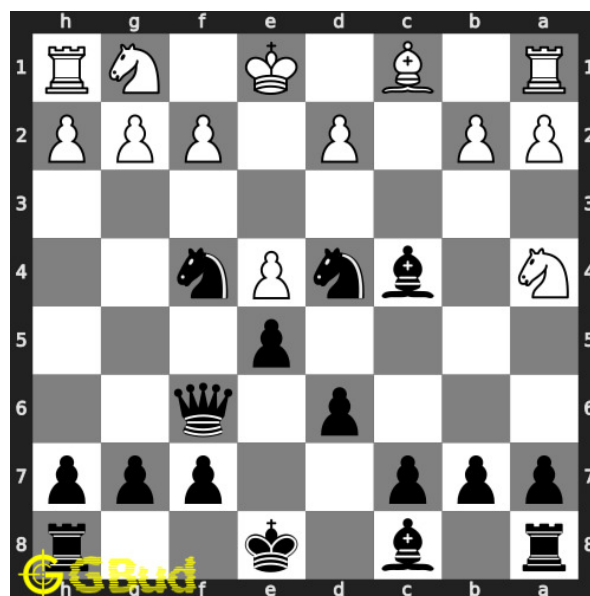


Figure 1: Solve this hard chess puzzle 0096. Mate in 3 moves @ <https://gbud.in/gshn73>



Figure 2: Solve this hard chess puzzle online with solution @ <https://gbud.in/gshn73>

Dont forget to check out [chess puzzles](#), [easy chess puzzles](#), [medium chess puzzles](#), [hard chess puzzles](#) and [chess puzzles collections](#) .

Solution to hard chess puzzle 0096

At this puzzle, next [move](#) is by [Black](#). The objective of the puzzle is to mate in 3 moves.

See the interactive solution at the [puzzle page](#)

Solution 1

Initial board position This is the initial board position of hard chess puzzle 0096.

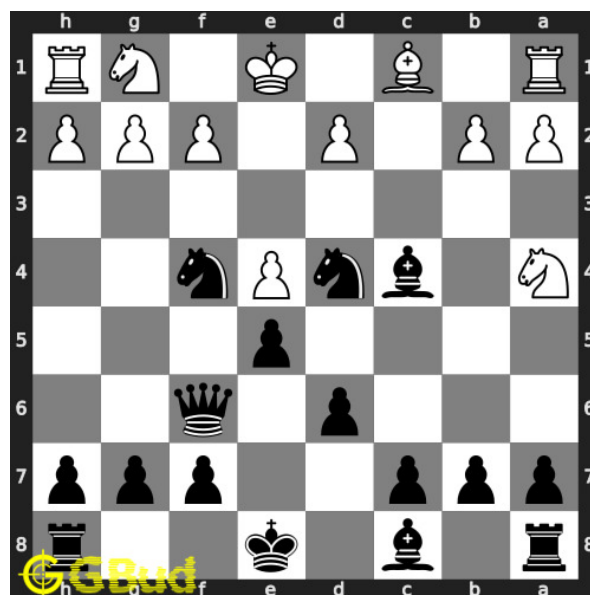


Figure 3: Initial board position of hard chess puzzle 0096

Move 1 Move by black

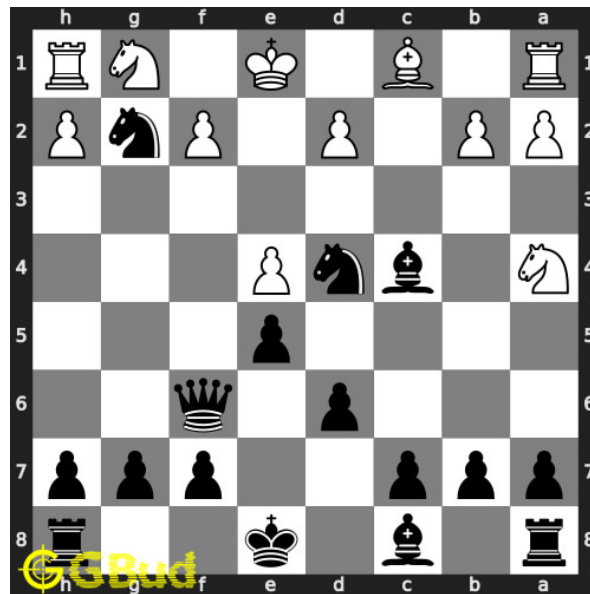


Figure 4: Nxb2+

your knight moves to g2 and gives check to opponent. this also opens the f file for your queen

Move 2 Move by white

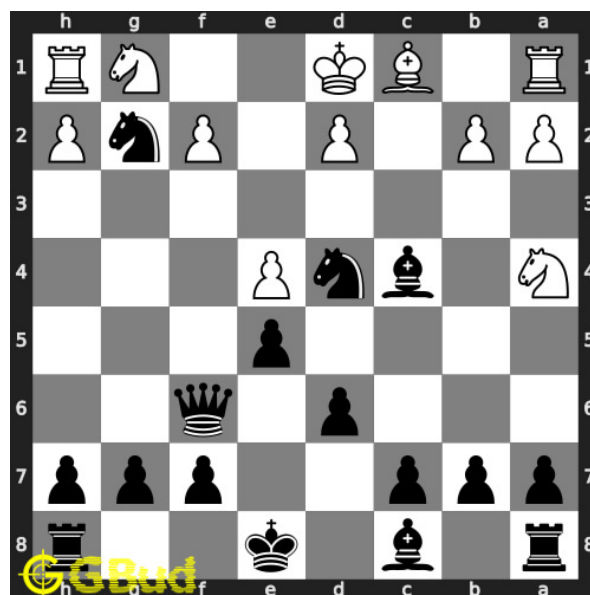


Figure 5: Kd1

opponent's king moves to d2 as this is the only legal move available.

Move 3 Move by black

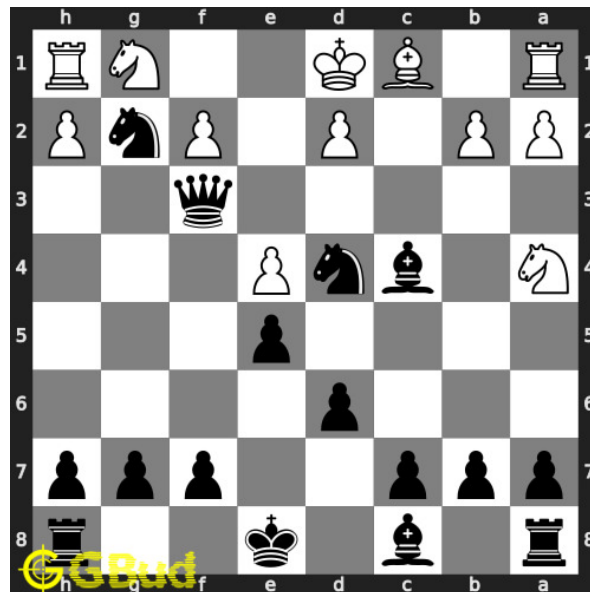


Figure 6: Qf3+

your **queen sacrifices** itself to deflect the **knight** which is guarding e2

Move 4 Move by white

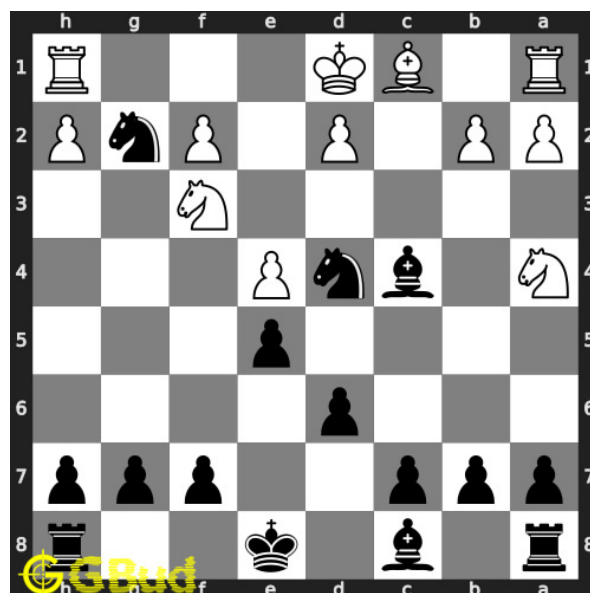


Figure 7: Nxf3

this is a zugzwang **move** as this forces opponent's **knight** to respond. if they block the chek with the **knight**, the game will end in next **move** by the **battery** of **queen** and **bishop**

Move 5 Move by black

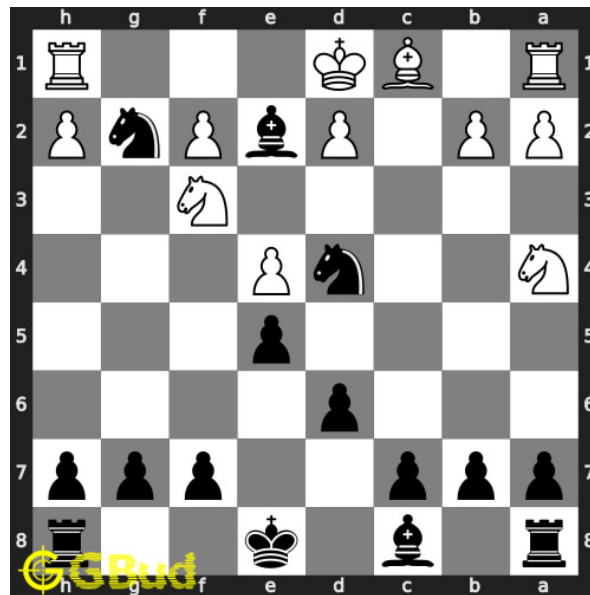


Figure 8: Be2#

your **bishop** moves to e2 and **checkmate**. opponent's **king** can't **capture** your **bishop** since it is supported by **knight**.. this is how you can **mate** in 3 moves.

Right moves for the solution to the hard chess puzzle 0096

Based on the objective of the puzzle, you have to make the right moves. Following are the right moves

1. Nxc2+, Qf3+, Be2#

Explanation for the moves

1. Nxc2+ - Your knight moves to c2 and gives check to opponent. This also opens the f file for your queen
2. Kd1 - Opponent's king moves to d1 as this is the only legal move available.
3. Qf3+ - Your queen sacrifices itself to deflect the knight which is guarding e2
4. Nxf3 - This is a zugzwang move as this forces opponent's knight to respond. If they block the check with the knight, the game will end in next move by the battery of queen and bishop

5. Be2# - Your bishop moves to e2 and checkmate. Opponent's king can't capture your bishop since it is supported by knight.. This is how you can mate in 3 moves.
6. For right move - You have used the combination of sacrifice and check effectively to have a mate in 3 moves. Keep up the hard work
7. For wrong move - You could have sacrificed your queen to checkmate. Try again

Categories of hard chess puzzle 0096

This hard chess puzzle falls in these categories.

1. [Hard chess puzzles](#)
2. [Sacrifice puzzles in chess](#)
3. [Mate in 3 puzzles in chess](#)
4. [Endgame puzzles in chess](#)
5. [Strategy puzzles in chess](#)
6. [Zugzwang puzzles in chess](#)
7. [Queen puzzles in chess](#)
8. [Knight puzzles in chess](#)
9. [Bishop puzzles in chess](#)

hard chess puzzle 0096 chart



Figure 9: hard chess puzzle 96 chart 1



Figure 10: hard chess puzzle 96 chart 2



Figure 11: hard chess puzzle 96 chart 3

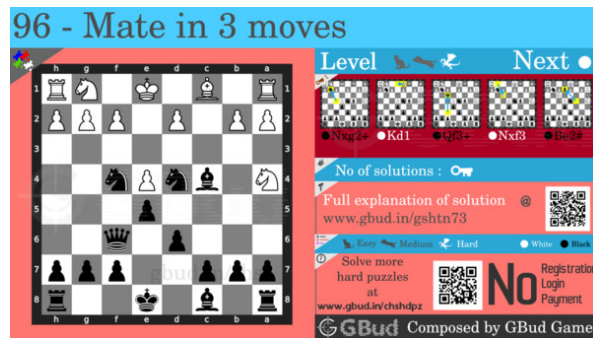


Figure 12: hard chess puzzle 96 chart 4

How to view the solution to hard chess puzzle 0096

To view the [solution to this puzzle](#), follow the steps given below

1. Go to the [puzzle page](#)
2. Click the solution button (Key as shown [below](#)) to view the solution



Figure 13: Click the solution button to view solutions @ <https://gbud.in/gshn73>

How to get help for moves in the hard chess puzzle 0096

To get help or the possible next moves in the puzzle, , follow the steps given below

1. Go to the [puzzle page](#)
2. Click the help button (exclamation mark as shown [below](#)) to get help or suggestion on next possible [move](#)



Figure 14: Click the help button to get help on next move @ <https://gbud.in/gshn73>



Figure 15: Solve more hard puzzles @ <https://gbud.in/chshdpz>



Figure 16: Solve other puzzles @ <https://gbud.in/chsgppz>

Play chess for free

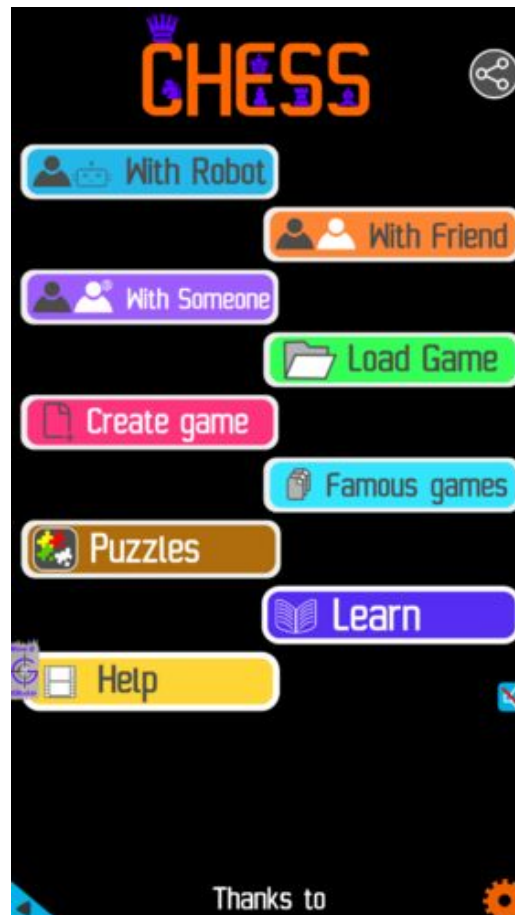


Figure 17: Play chess online for free. Solve puzzles and play with friends

Play chess for free at <https://gbud.in/chs>

We present you a platform to play chess online with friends for free. No need to install any app. You can play chess for free without registration or login.

Simple. You can do several chess related activities.

1. [solve chess puzzles](#)
2. [learn about chess](#)
3. [play chess with computer](#)
4. [play chess with friend](#)
5. [create your own chess games](#)

6. [fen viewer](#)
7. [fen editor](#)
8. [fen generator](#)
9. [pgn viewer](#)
10. [chess board editor](#)
11. [view famous chess games.](#)



Figure 18: Solve this puzzle online by scanning this QR code or go to the link below

<https://gbud.in/gshn73>

Read the latest article on Hard Chess puzzle # 0096 - Mate in 3 moves by scanning this QR code or click the link

Previous article : « [Hard Chess puzzle # 0095 - Mate in 3 moves](#)

Next article : [Hard chess puzzles](#) »

[Back to top](#)

[Contact Us](#)